

THE IMAGINE SERIES

The Imagine

5035

27' x 72'

DIMENSIONS

1,920 sf

LIVING SPACE

4

BEDROOMS

2

BATHROOMS

OVERVIEW

Large doublewide 4 Bed + 2 Bath and split bedrooms with central kitchen and living room, dining room and family room. All bedrooms come with walk-in closets

Heritage Home Center

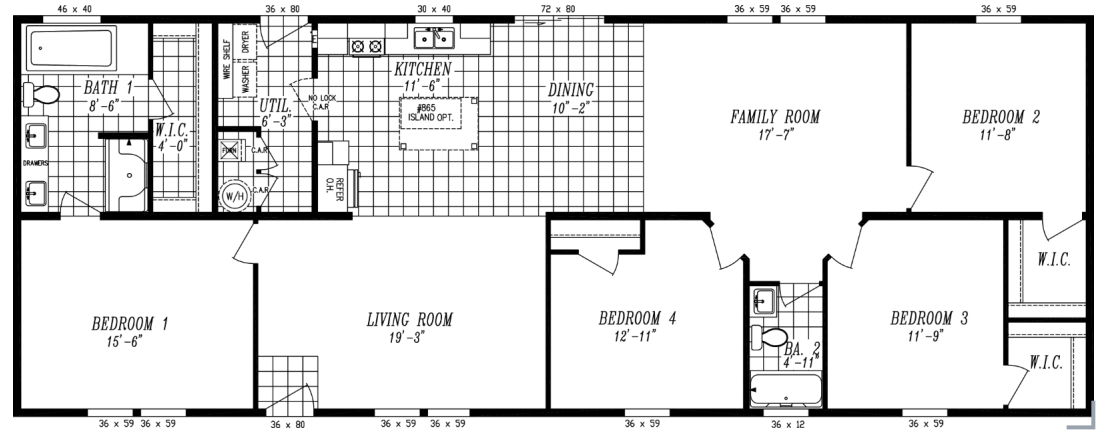
(425) 353-5464

or Request Firm Quote

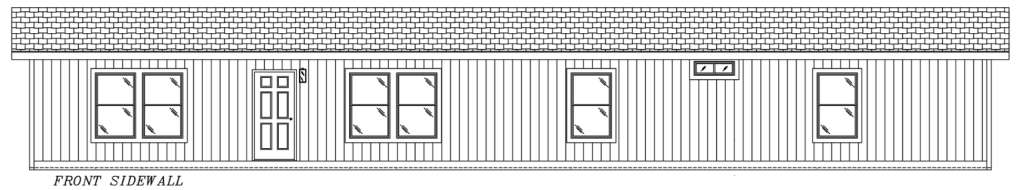
EMAIL US

01 FLOOR PLAN

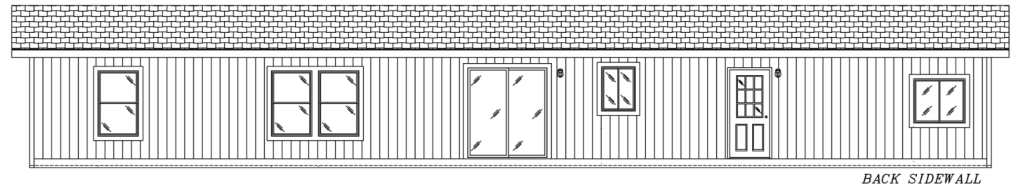
1,920 SQ FT · 27' x 72'



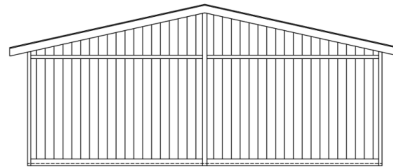
02 FRONT ELEVATION



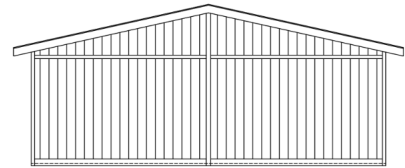
FRONT SIDEWALL



BACK SIDEWALL



FRONT ENDWALL



REAR ENDWALL

The Imagine 5035

4 Bedrooms | 2 Bathrooms | 1,920 sq ft

STANDARD FEATURES

- ✓ Energy Star Rating
- ✓ LP SmartSide Panel Siding with 5/50 Year Warranty
- ✓ Standard Deluxe Bath 1 with 6' Deck Tub and 60" Fiberglass Double Bench Seat Walk In Shower
- ✓ 2x6 Exterior Wall Studs
- ✓ Wood Cased Windows w/Flat Trim
- ✓ Rheem 50 Gallon Water Heater
- ✓ 4 Standard Can Lights in Living Room and Family Room
- ✓ Rounded Drywall Corners
- ✓ Samsung Kitchen Appliances

MOST POPULAR UPGRADES

- ✓ 80 Lb. Roof Load for high snow areas
- ✓ Cement Board Lap Siding
- ✓ 20' Open Face Dormer
- ✓ 27.4 Side by Side Refrigerator
- ✓ Self Clean, Smooth Top Convection Range
- ✓ Above Range Microwave with Cabinets
- ✓ Energy Star Dishwasher
- ✓ 2" Blinds
- ✓ Wood Shelving in Closets and Pantries
- ✓ 8# Carpet Pad
- ✓ 9' Flat Ceiling with Enlarged Windows

Heritage Home Center

Washington's Price and Volume Leader

(425) 353-5464

CALL TO TOUR

[Request Firm Quote](#)

EMAIL US

Features/specs subject to change.